

skypod[®]

Eye-catching, affordable and easy
to install pitched lantern roofs



**MADE & RECYCLED
IN THE UK**

eurocell[®]

All together better



skypod®

PITCHED LANTERN ROOFS

There are lots of ways to add light to buildings, but none are as stylish as Skypod pitched lantern roofs

Impress customers and end-users with desirable, space-enhancing lantern roofs

The Eurocell Skypod pitched lantern roof system enables you to create an eye-catching, contemporary feature that floods the interior of a property with natural light. It brings life and freshness to uninspiring flat-roofed buildings, and makes a stunning alternative to conventional conservatory roofs.

Skypod lantern roofs add height, light and volume to any living space. They are the perfect choice for a wide range of refurbishment, extension or new-build projects – including reception areas, classrooms, orangeries, kitchen-diners and garage conversions.

Affordable, energy efficient and attractive – the perfect alternative to aluminium

Eurocell designed Skypod as an affordable alternative to aluminium skylights, making it accessible for more applications, to more people. As well as value issues, the 'industrial' aesthetic of aluminium skylights is unsuited to many properties and not to everyone's taste.

Skypod offers significant energy-efficiency improvements, with a U-value as low as 1.0* – helping your customers to save on their energy bills. The PVC-U cappings also help homeowners to match the appearance of their lantern roof to existing PVC-U windows and doors.

WHY CHOOSE SKYPOD?



Designed for superior performance



Fast, accurate installation



U-values as low as 1.0*



20° or 35° fixed pitch



A choice of frame and glass colours



Cheaper than full aluminium alternatives



Kits delivered in 4 working days†



10-year guarantee

The architectural design means there are no fussy ridge crestings or finials to fit, giving your customers the ultimate in clean sight-lines. A unique ridge end cover cap completes the sleek appearance.

Create lantern roofs of any size, up to 2.75m × 8.7m

Skypod is available in a wide range of sizes, so you can create a lantern roof that's suitable for any project. With ten design options to choose from you can tailor Skypod to suit your customers' individual needs.

Simple, fast installation – for a quality-assured finish on every job

Crucially, Skypod has been designed for fast, accurate, simple installation. It requires only square cuts, with no mitring or awkward angles to negotiate, and all screw holes are pre-drilled. This enables installers to give customers a precision-fitted

watertight lantern roof, while making the job as quick and easy as possible.

Delivered in four working days

Once the site has been surveyed and measurements taken, you can order your bespoke Skypod roof from any of the 200+ Eurocell branches across the UK. Your complete ready-to-install kit, including all screws and fixings, will be delivered to the branch in 4 working days†. You can then either collect it yourself or arrange free delivery direct to your site**.

Complete the job

All the tools and sealants you need to install your lantern roof to the highest standard are available from your local Eurocell branch, so you can pick up everything you need when you collect your Skypod. It's important to use a sealant that is compatible with self-cleaning glass, and we recommend Soudal SMX 506.

* Centre Pane U-Value. Standard U Value is 1.2 centre pane. U-value is applicable to glass only.

** Free delivery applies to orders over £50 and deliveries to mainland UK only, excluding Northern Scotland. † 5 days for branch customers.

MORE FLEXIBILITY

TEN LANTERN ROOF STYLES ARE NOW AVAILABLE



No side rafter bars

With the fewest possible number of slimline bars needed to create uninterrupted glazed surfaces of up to 1.5m x 2.75m, Skypod with no side rafter bars is the cleanest, simplest way to introduce overhead natural light into any room space. It offers a practically unobstructed window on the world above and, come rain or shine, keeps homeowners warm and comfortable thanks to its temperature controlling glass and high levels of energy efficiency.

With side rafter bars

By introducing additional bars to the standard Skypod design, side rafter bars extend the possibilities for fully glazed rooflights to spans of up to 1.5m wide x 7.45m long. The result is a dazzling feature roof that turns what could so easily be an underwhelming flat roof extension into a year round living space with all the natural light and lofted headroom your customers could ever wish for.



Skypod with no side rafter bars

Three-bar ridge end

The extra strength and rigidity of our 3-bar Skypod option not only allows you to install even longer, even wider vaulted rooflights into your customers' homes. It also gives a much more traditional 'orangery' style look to their rooflight, with the introduction of classically proportioned end panels in a spacious vaulted glass ceiling up to 2.75m wide x 8.7m long in size.

Skypod square

The alternative to a single span rectangular rooflight, our square lantern roof offers perfectly balanced sightlines and, thanks to its simple 4-hip design, higher levels of natural light than conventional designs of the same surface area. Because it can be produced in sizes right down to 0.5m x 0.5m, it means even the smallest flat roofed space in the home can benefit from day long natural light.



With this 3-bar ridge end design, you can create larger lantern roofs

skypod

Now you can give your customers a square lantern roof – with symmetrical looks!



SKYPOD PLUS

THE ALUMINIUM SKYPOD

Architectural aesthetics with added protection against the elements

Building on the existing purpose designed thermally broken aluminium ridge and ring beam, Skypod Plus now offers aluminium rafter top caps. This means the whole of the external face not only offers stunning architectural aesthetics but also greater protection against the harsh summer mid-day sun. All internal bars are capped in the conventional way with PVC-U and are available in a black, white or grey finish.*

Skypod Plus is available in 2 or 3 bar options and the square shape and is available in black, white and grey. The system has a fixed roof pitch of 20° and is supplied in a choice of five self-cleaning, temperature controlling glass options, with a centre pane U-value of 1.0W/m²K achievable.**



Skypod Plus in Matt Black

* Black and grey internal finishes are produced by a spraying process.

** Centre Pane U-Value. Standard U Value is 1.2 centre pane. U-value is applicable to glass only.



Skypod Plus in Matt Black

The contemporary and balanced aesthetics on Skypod Plus have been achieved by avoiding the use of bulky end caps, crestings and finials, which are incorporated into skylights when using standard conservatory components.

Skypod Plus is available in two formats: kits from our kitting department and individual bar length components.



Skypod Plus in White both sides



Skypod Plus in Grey both sides

EXCEPTIONAL STYLE & PERFORMANCE

1.0*
U-VALUE

THERMALLY BROKEN
RIDGE

THERMALLY BROKEN
RING BEAM

SLEEK
DESIGN

ARCHITECTURAL
COLOURS

New and improved

The Eurocell Skypod pitched lantern roof system has had further enhancements with the introduction of a more discreet internal boss, purpose designed and secure fix external rafter end caps and a thermally broken ring beam to create a virtually condensation free finish.

Pitch for more projects

Skypod is also available with a 35° pitch aswell as the usual 20°. That means it can be fabricated in much smaller sizes (right down to 0.5m x 0.5m) and fitted to a much smaller roof without losing out on light levels. Skypod Plus is only available with a 20° pitch.

Colours to frame the view

Like all Eurocell PVC-U products, Skypod comes with an exact colour-match guarantee. That means the colour is precisely matched to all Eurocell window, door and conservatory roof products, creating a co-ordinated, consistent look across any property.

Skypod has a white internal finish as standard, to maintain a bright, fresh interior. A range of external colours are available to complement existing architectural style, as well as a choice of glass options. Skypod Plus has a white internal finish, or an option of black or grey finish**.

Ten-year guarantee

Skypod lantern roofs are guaranteed for ten years. That means you can give your customers the assurance of a robust, well-designed, precision-made product that's built to last – manufactured by the UK's leading PVC-U specialist.



UNIQUE

SPIDER BAR GLAZING CAP






PURPOSE DESIGNED
RAFTER END CAPS

FIXED **20°**
OR
35° PITCH

SKYPOD FRAME COLOURS

					
WHITE White interior	ANTHRACITE GREY White interior	ANTHRACITE GREY* Anthracite interior	MOONDUST GREY White interior	ROSEWOOD White interior	GOLDEN OAK White interior

GLASS COLOURS

		
BLUE	NEUTRAL	BRONZE
		
AQUA	CLEAR	

SKYPOD PLUS FRAME COLOURS

				
MATT BLACK White interior	MATT BLACK Black interior**	GREY White interior	GREY Grey interior**	WHITE White interior

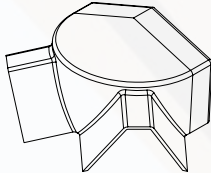
ADDITIONAL COLOURS AND SPECIFICATIONS ARE MADE TO ORDER ON EXTENDED LEAD TIMES

* Anthracite Grey/Anthracite Grey not available for Skypod with a 35° fixed pitch
 ** Black and grey internal finishes on Skypod Plus are produced by a spraying process

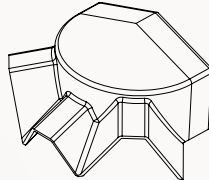
TECHNICAL INFORMATION

SYSTEM COMPONENTS

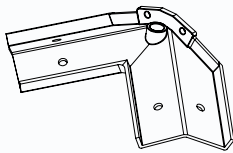
COMPONENTS



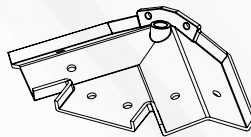
CRS 9241
Skypod
2-bar top cap



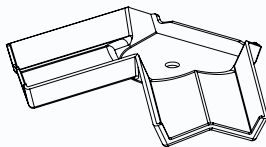
CRS 9240
Skypod
3-bar top cap



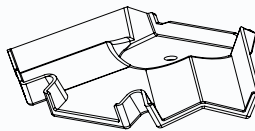
CRS 9522A
Skypod
2-bar spider bracket



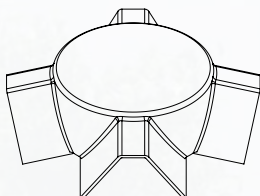
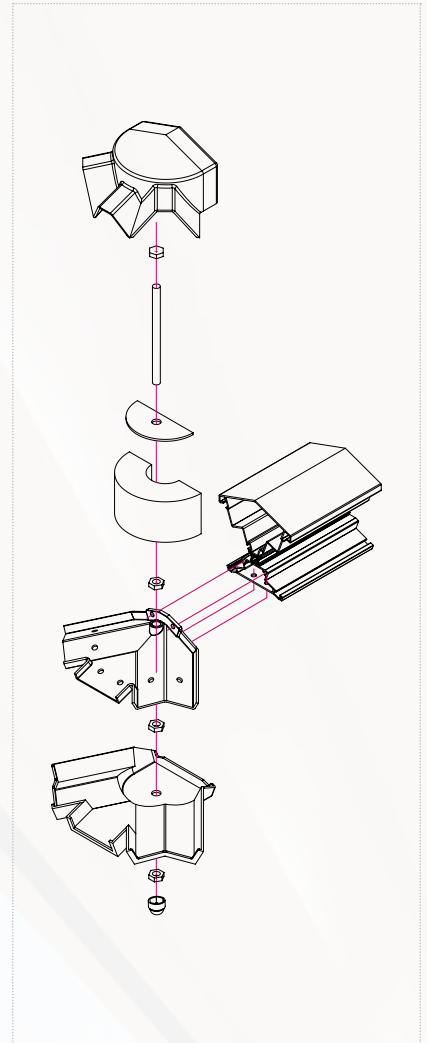
CRS 9521A
Skypod
3-bar spider bracket



CRS 9249
Skypod
2-bar bottom cap



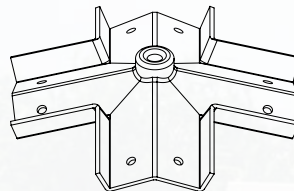
CRS 9248
Skypod
3-bar bottom cap



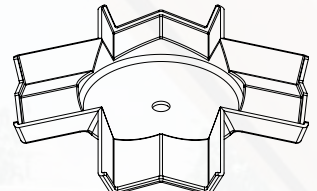
CRS 9242
Skypod Square
top cap



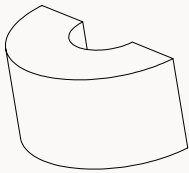
CRS 9423
Skypod Square
foam bung sealing plate



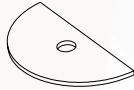
CRS 9523A
Skypod Square
spider bracket



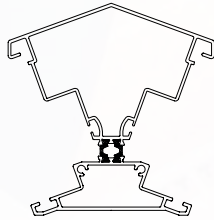
CRS 9250
Skypod Square
bottom cap



CRS 9421
Skypod foam
bung



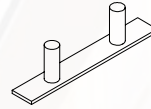
CRS 9422A
Skypod foam bung
sealing plate



CRS 9520A
Skypod ridge
body



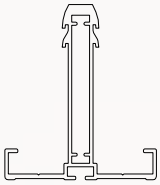
CRS 8625
Single variable
support stud



CRS 8624
Double variable
support stud



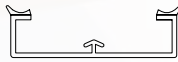
CRS 9200
Skypod screw cap
covers



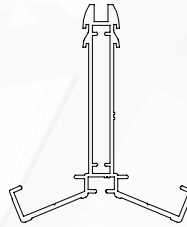
CRS 8501A
Standard rafter



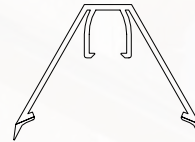
CRS 8016
25mm
rafter top cap



CRS 8011
Rafter bottom cap



CRS 8502A
Edwardian hip



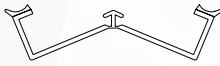
CRS 8017
25mm Edwardian
hip top cap



CRS 8053
Eaves beam seal



CRS 8056
25mm Glazing end trim



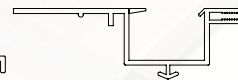
CRS 8012
Hip bottom cap



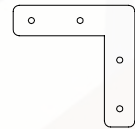
CRS 9550A
Skypod
eaves 20°



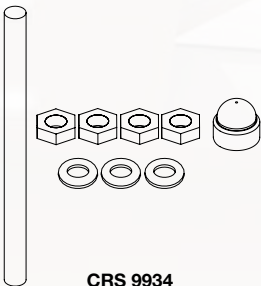
CRS 9552A
Skypod
thermally broken eaves beam



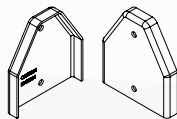
CRS 8024
24/25mm ridge
glazing trim



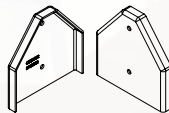
CRS 8654
90° eaves
beam cleat



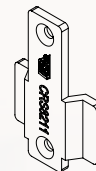
CRS 9934
Skypod
boss kit



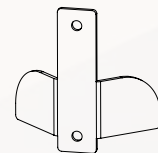
CRS 9201
Skypod
rafter end cap



CRS 9202
Skypod
hip rafter end cap



CRS 8211
Glazing stop
(CRS 8628 Glazing
stop screws)

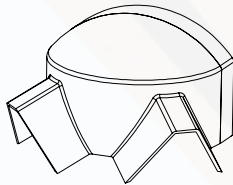


CRS 9611S
Stainless steel glazing stop
(CRS 8628 Glazing
stop screws)

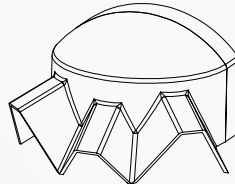
TECHNICAL INFORMATION

SYSTEM COMPONENTS

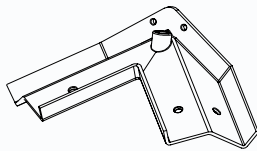
COMPONENTS



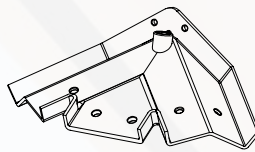
CRS 9244
35° Skypod
2 bar top cap



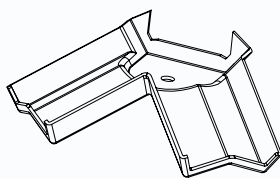
CRS 9243
35° Skypod
3 bar top cap



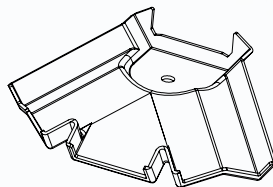
CRS 9525A
35° Skypod
2 bar spider bracket



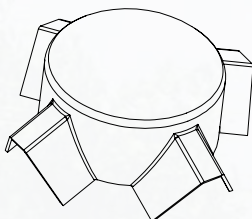
CRS 9524A
35° Skypod
3 bar spider bracket



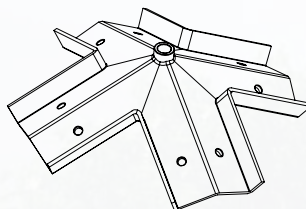
CRS 9252
35° Skypod
2 bar bottom cap



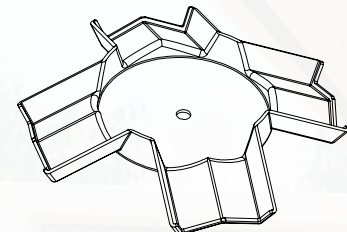
CRS 9251
35° Skypod
3 bar bottom cap



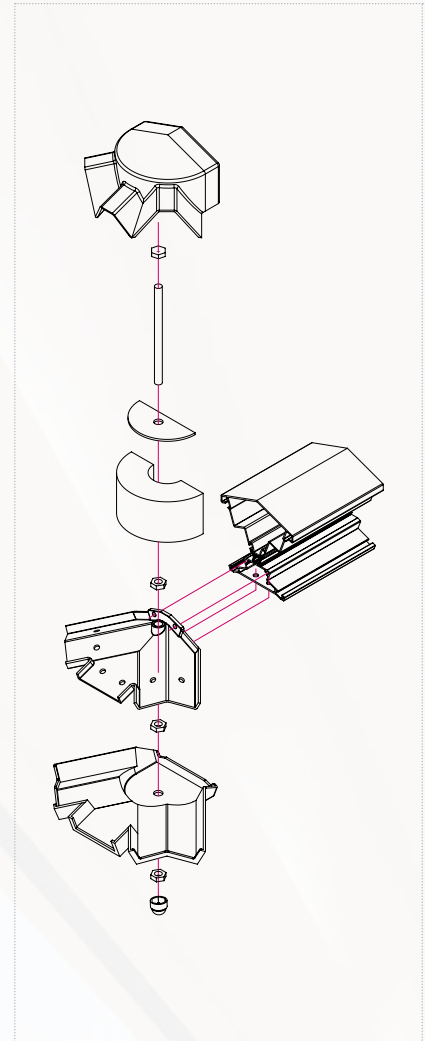
CRS 9245
35° Skypod Square
top Cap

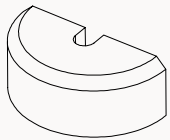


CRS 9526A
35° Skypod Square
spider bracket

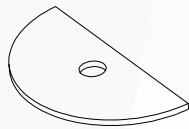


CR 9253
35° Skypod Square
bottom Cap

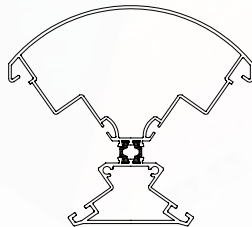




CRS 9424
35° Skypod
foam bung



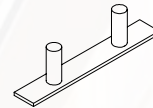
CRS 9425A
35° Skypod foam bung
sealing plate



CRS 9530A
35° Skypod
ridge body



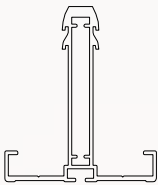
CRS 8625
Single variable
support stud



CRS 8624
Double variable
support stud



CRS 9200
Skypod screw cap
covers



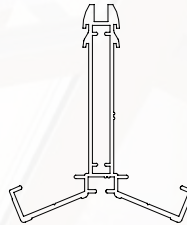
CRS 8501A
Standard rafter



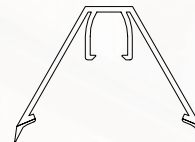
CRS 8016
25mm
rafter top cap



CRS 8011
Rafter bottom cap



CRS 8502A
Edwardian hip



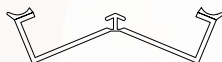
CRS 8017
25mm Edwardian
hip top cap



CRS 8053
Eaves beam seal



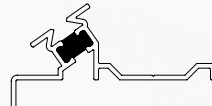
CRS 8056
25mm Glazing end trim



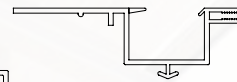
CRS 8012
Hip bottom cap



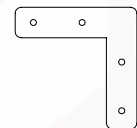
CRS 9551A
35° Skypod
ring beam



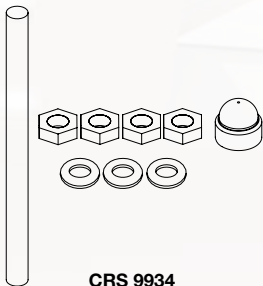
CRS 9553A
35° Skypod thermally broken
eaves beam



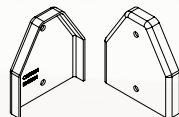
CRS 8024
24/25mm ridge
glazing trim



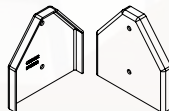
CRS 8654
90° eaves
beam cleat



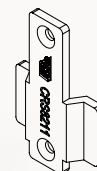
CRS 9934
Skypod
boss kit



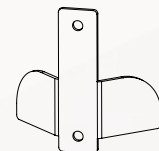
CRS 9201
Skypod rafter
end cap



CRS 9202
Skypod hip rafter
end cap



CRS 8211
Glazing stop
(CRS 8628 Glazing
stop screws)

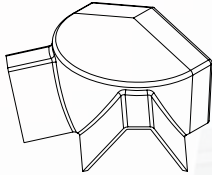


CRS 9611S
Stainless steel glazing stop
(CRS 8628 Glazing
stop screws)

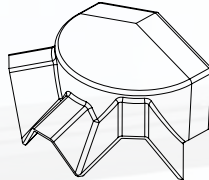
TECHNICAL INFORMATION

SYSTEM COMPONENTS

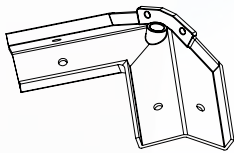
COMPONENTS



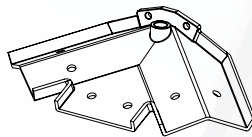
CRS 9241
Skypod
2-bar top cap



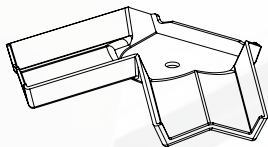
CRS 9240
Skypod
3-bar top cap



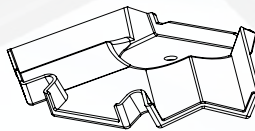
CRS 9522A
Skypod
2-bar spider bracket



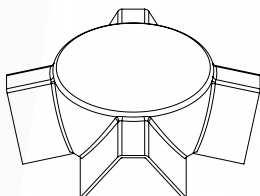
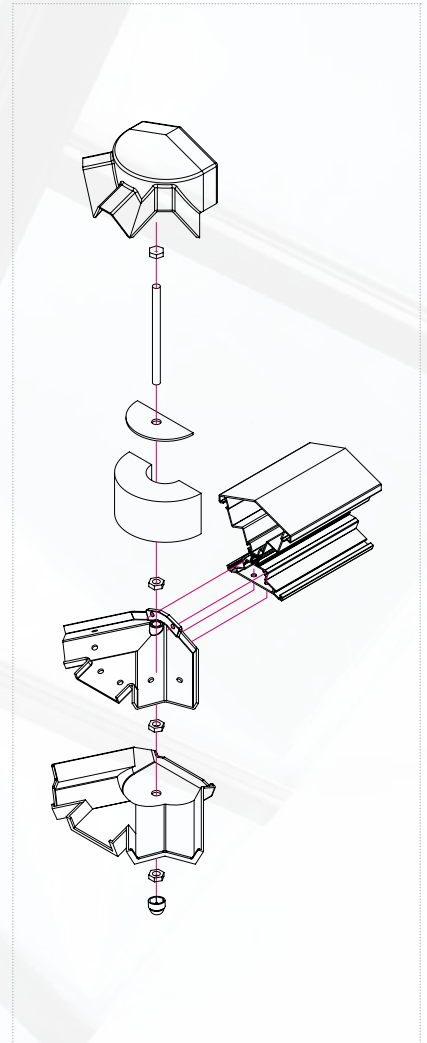
CRS 9521A
Skypod
3-bar spider bracket



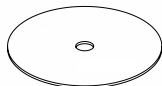
CRS 9249
Skypod
2-bar bottom cap



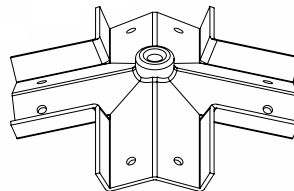
CRS 9248
Skypod
3-bar bottom cap



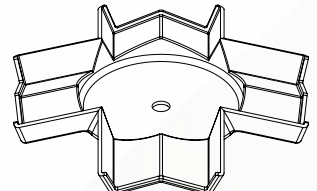
CRS 9242
Skypod Square
top cap



CRS 9423
Skypod Square
foam bung sealing plate



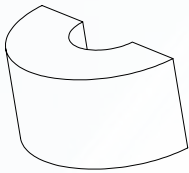
CRS 9523A
Skypod Square
spider bracket



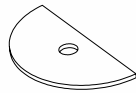
CRS 9250
Skypod Square
bottom cap

skypod^{PLUS}

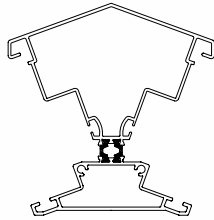
PREMIUM LANTERN ROOFS



CRS 9421
Skypod
foam bung



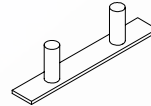
CRS 9422A
Skypod
foam bung sealing plate



CRS 9520A
Skypod
ridge body



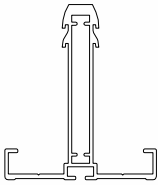
CRS 8625
Single variable
support stud



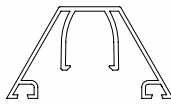
CRS 8624
Double variable
support stud



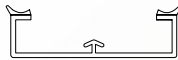
CRS 9200
Skypod
screw cap covers



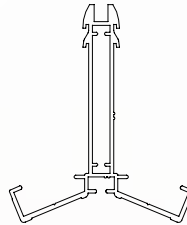
CRS 8501A
Standard rafter



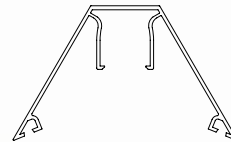
CRS 8516A
Skypod Plus
aluminium rafter top cap



CRS 8011
Rafter bottom cap



CRS 8502A
Edwardian hip



CRS 8517A
Skypod Plus
aluminium hip top cap

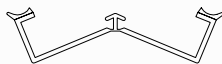


CRS 8053
Eaves beam seal

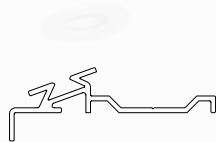
25mm glazing
end trim
CRS 8056



CRS 8056
25mm Glazing end trim



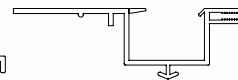
CRS 8012
Hip bottom cap



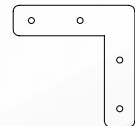
CRS 9550A
Skypod
eaves 20°



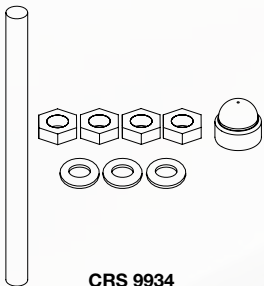
CRS 9552A
Skypod
thermally broken eaves beam



CRS 8024
24/25mm ridge
glazing trim



CRS 8654
90° eaves
beam cleat



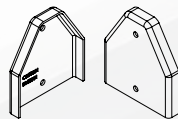
CRS 9934
Skypod
boss kit



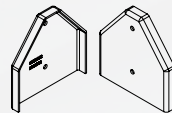
CRS 8010
Skypod Plus
thermal break for
aluminium top caps



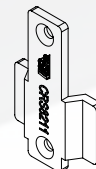
CRS 8411G
Skypod Plus
aluminium top gasket



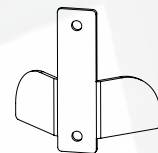
CRS 9201
Skypod
rafter end cap



CRS 9202
Skypod
hip rafter end cap



CRS 8211
Glazing stop
(CRS 8628 Glazing
stop screws)



CRS 9611S
Stainless steel glazing stop
(CRS 8628 Glazing
stop screws)

TECHNICAL INFORMATION

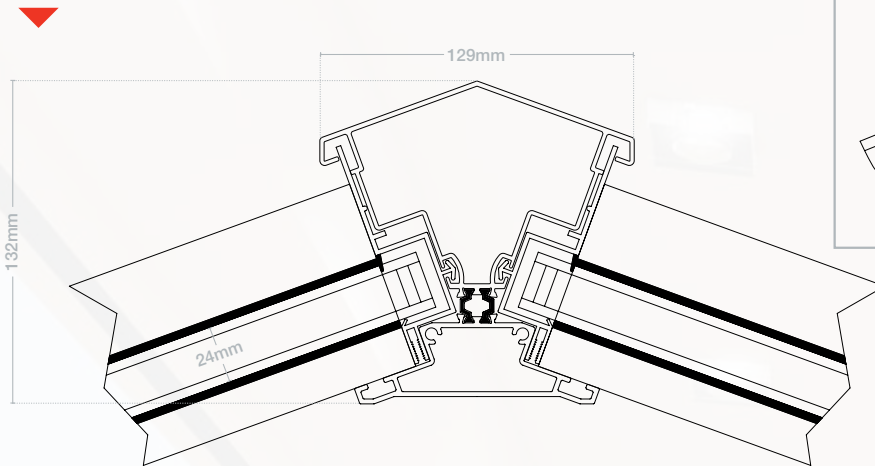
ASSEMBLIES

Skypod and Skypod Plus
with 20° fixed pitch

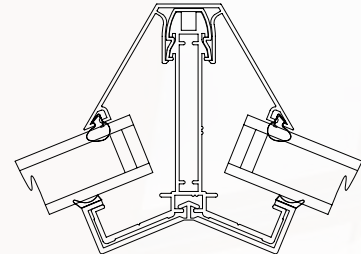
20° SKYPOD/SKYPOD PLUS

Ridge assembly

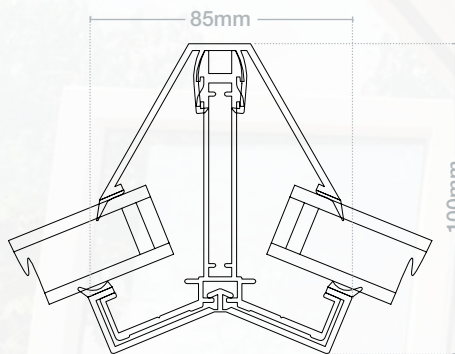
Powder-coated aluminium, thermally broken



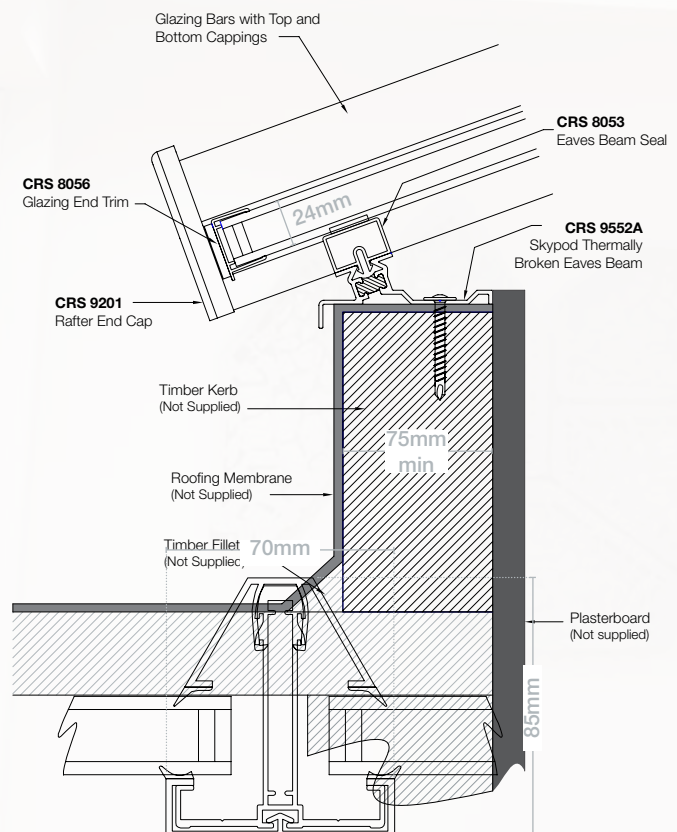
skypod^{PLUS} Hip assembly



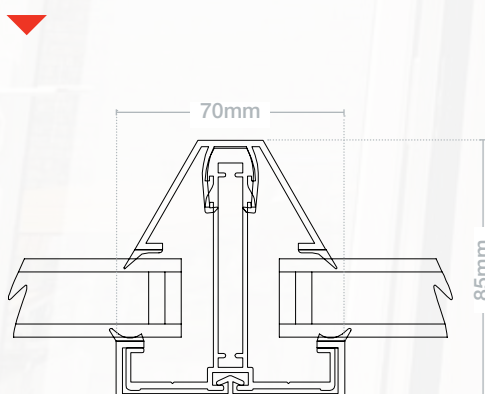
Hip assembly



Ring beam on kerb assembly



Rafter assembly



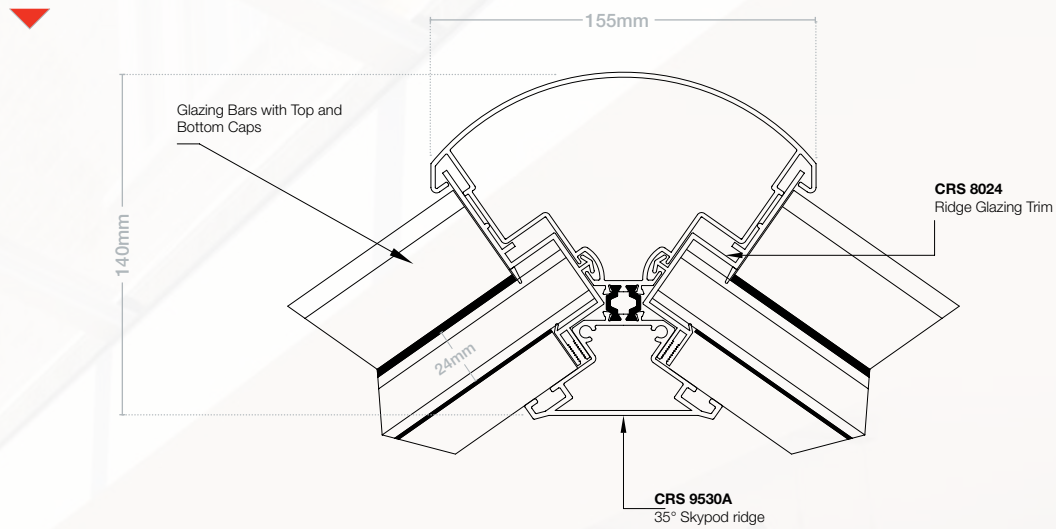


Skypod
with 35° fixed pitch

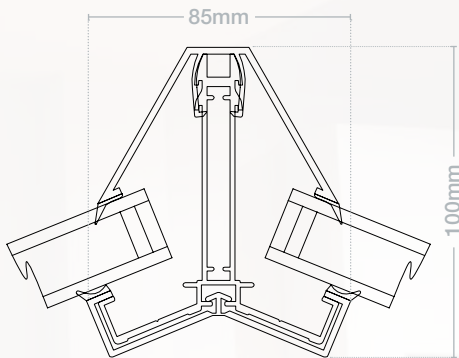
35° SKYPOD

Ridge assembly

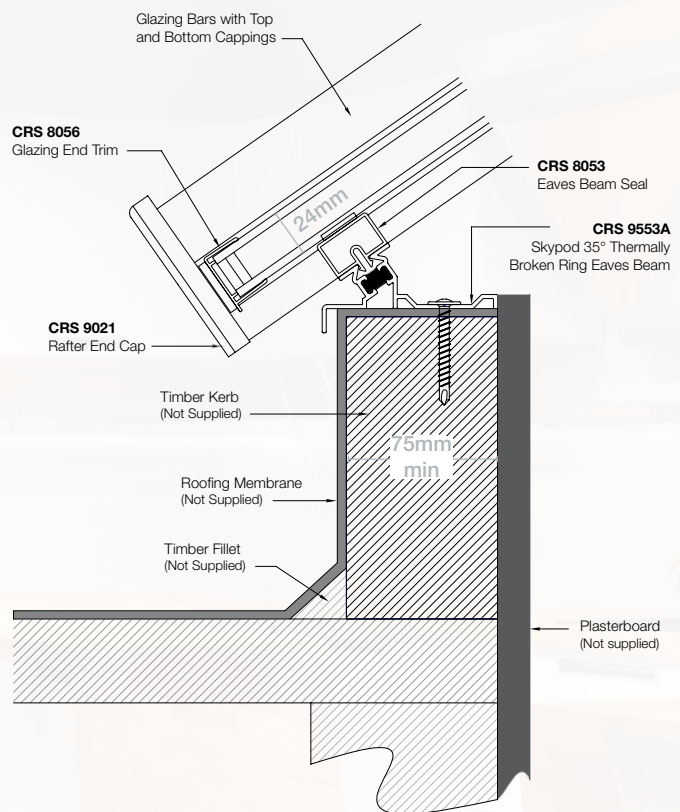
Powder-coated aluminium, thermally broken



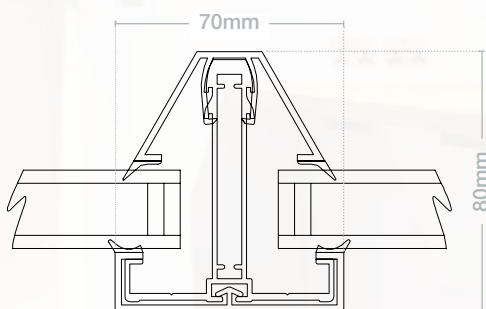
Hip assembly



Ring beam on kerb assembly

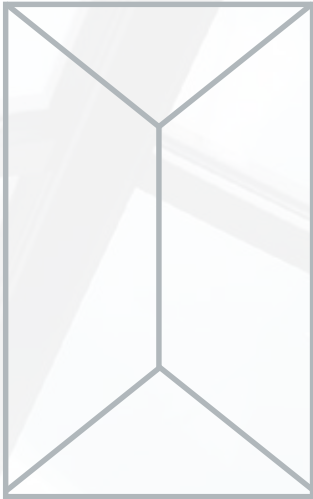


Rafter assembly



TECHNICAL INFORMATION

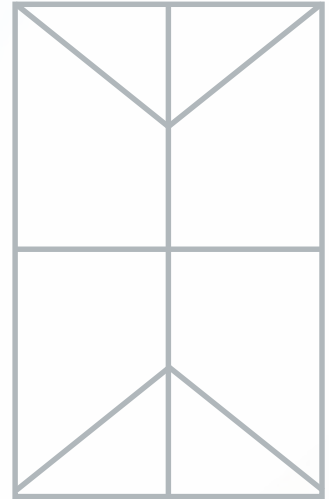
MINIMUM & MAXIMUM SIZES



No 'side-bars' needed on sizes up to 1.5m x 2.75m



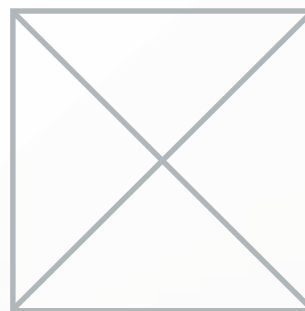
Up to 1.5m x 7.45m



Up to 2.75m x 8.7m



Up to 2.75m x 2.75m



Up to 1.5m x 1.5m

skypod[®]

Available in fixed 20° and 35° pitches

skypod^{PLUS}

Available in fixed 20° pitch

Note: Design will vary dependent on size. All Skypod lantern roofs are made-to-order, and you will receive a design to sign-off before the item goes into production.

CASE STUDY



SKYPOD TRANSFORMS FLAT-ROOF EXTENSION

When builder Colin Clarkson visited his local Eurocell branch in Wakefield to get a price on some roof tiles, he did not expect to end up renovating his new home from top to bottom in products from one single source. Yet now his upgraded bungalow features Eurocell-sourced products throughout – from Tapco composite slate tiles to Skypod lantern roofs, a Dales Collection composite door, PVC-U windows and even the rainwater goods.

The building itself was an early 1960s two-bedroom brick and block bungalow with a conservatory extension and was in a state of disrepair. Colin saw its potential and bought it to convert into a three-bedroom home with pitched dormers and a flat-roofed extension that matched the best of contemporary design and living standards.

“I first went to Eurocell because it was one of the few suppliers of Tapco composite roof slates and they were well priced, yet then when I saw the Skypod lantern roofs I wanted them. I had a conservatory before and knew this would sort the problem of freezing in winter and boiling in summer. And it all grew from there.”

Supplied with a 10-year guarantee, Skypod lantern roofs are swiftly installed and bring the benefits of extra light and height without the penalty in conservatory heating costs as the double-glazed lantern roof has a U-value of 1.0. A wide range of frame and glass options complement any home while self-cleaning, temperature controlled glass keeps maintenance to a minimum. Available in a choice of designs, Skypod can be manufactured to fit any space with sizes up to 2.75m x 8.7m.

“When I saw the Skypod lantern roofs I wanted them. I had a conservatory before and knew this would sort the problem of freezing in winter and boiling in summer.”

Colin Clarkson
Builder



All together better

For more information about **skypod**® pitched lantern roofs from Eurocell, call our customer services team on **0333 777 3040**, or visit **eurocell.co.uk/skypod**

Eurocell plc, High View Road, Alfreton, Derbyshire DE55 2DT



eurocell.co.uk